



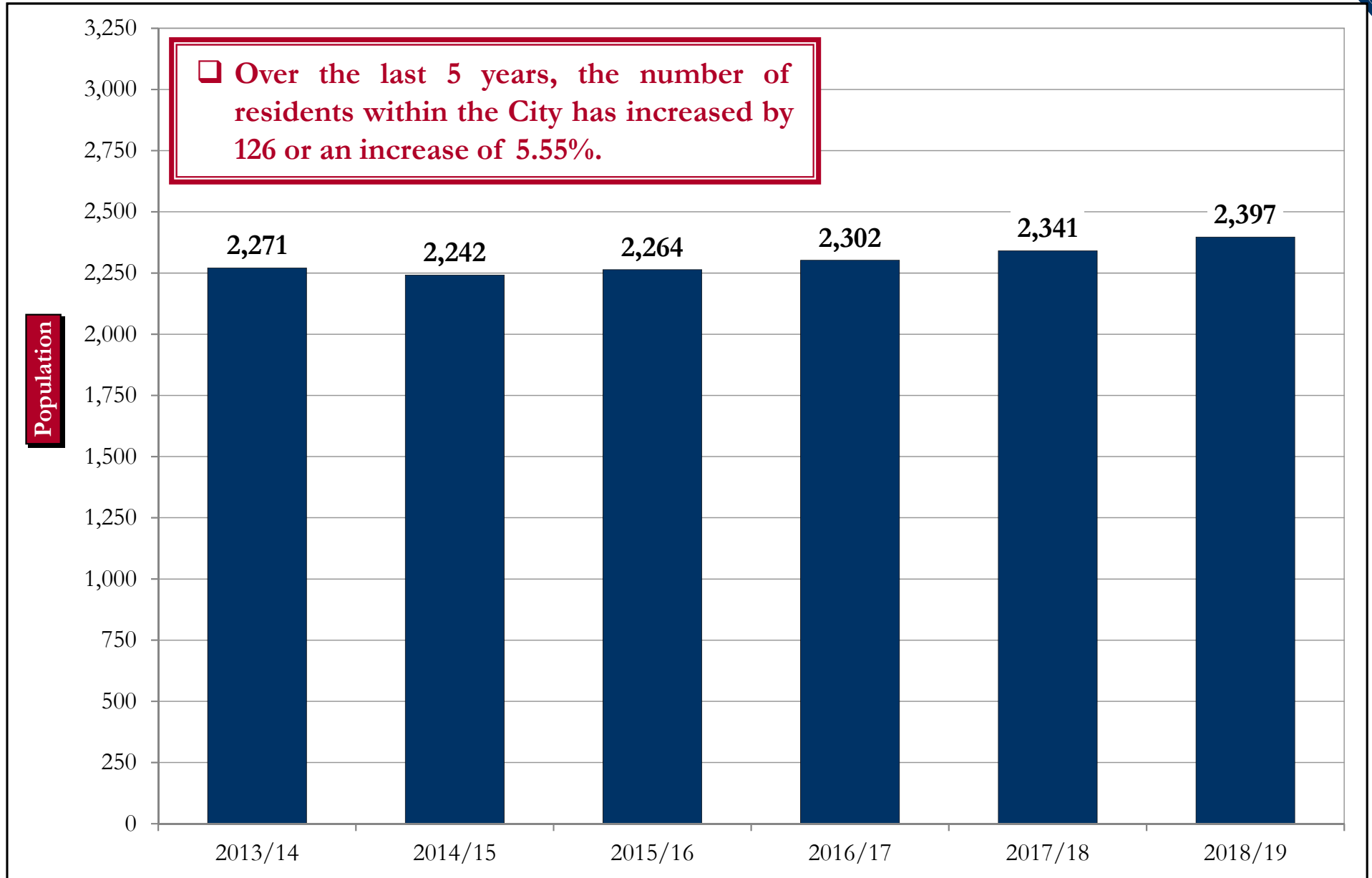
City of Panorama Village, Texas

Annual Report of Local Debt Information (Pursuant to Local Government Code, Section 140.008)

Fiscal Year Ended September 30, 2019

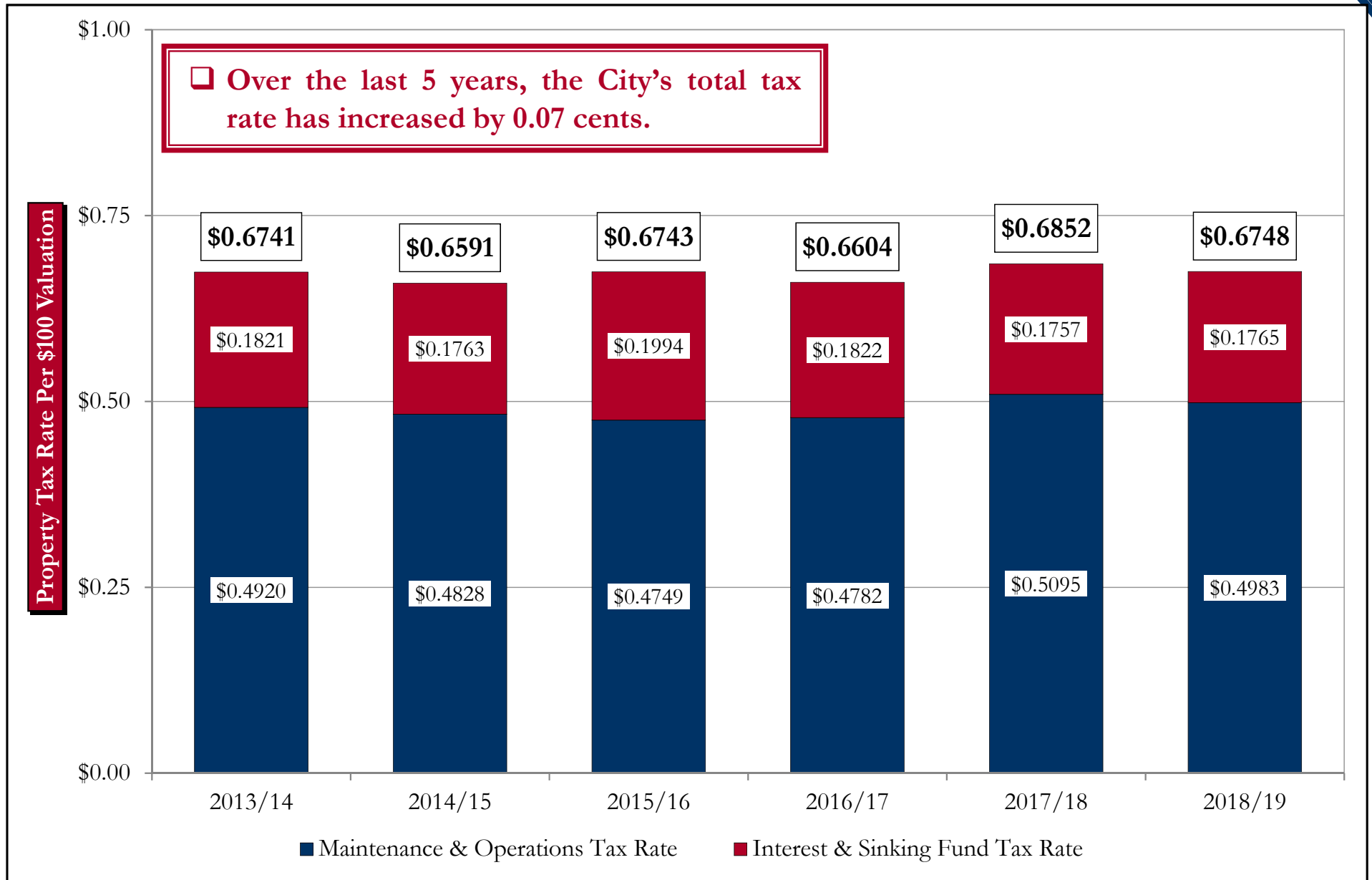


Historical Population



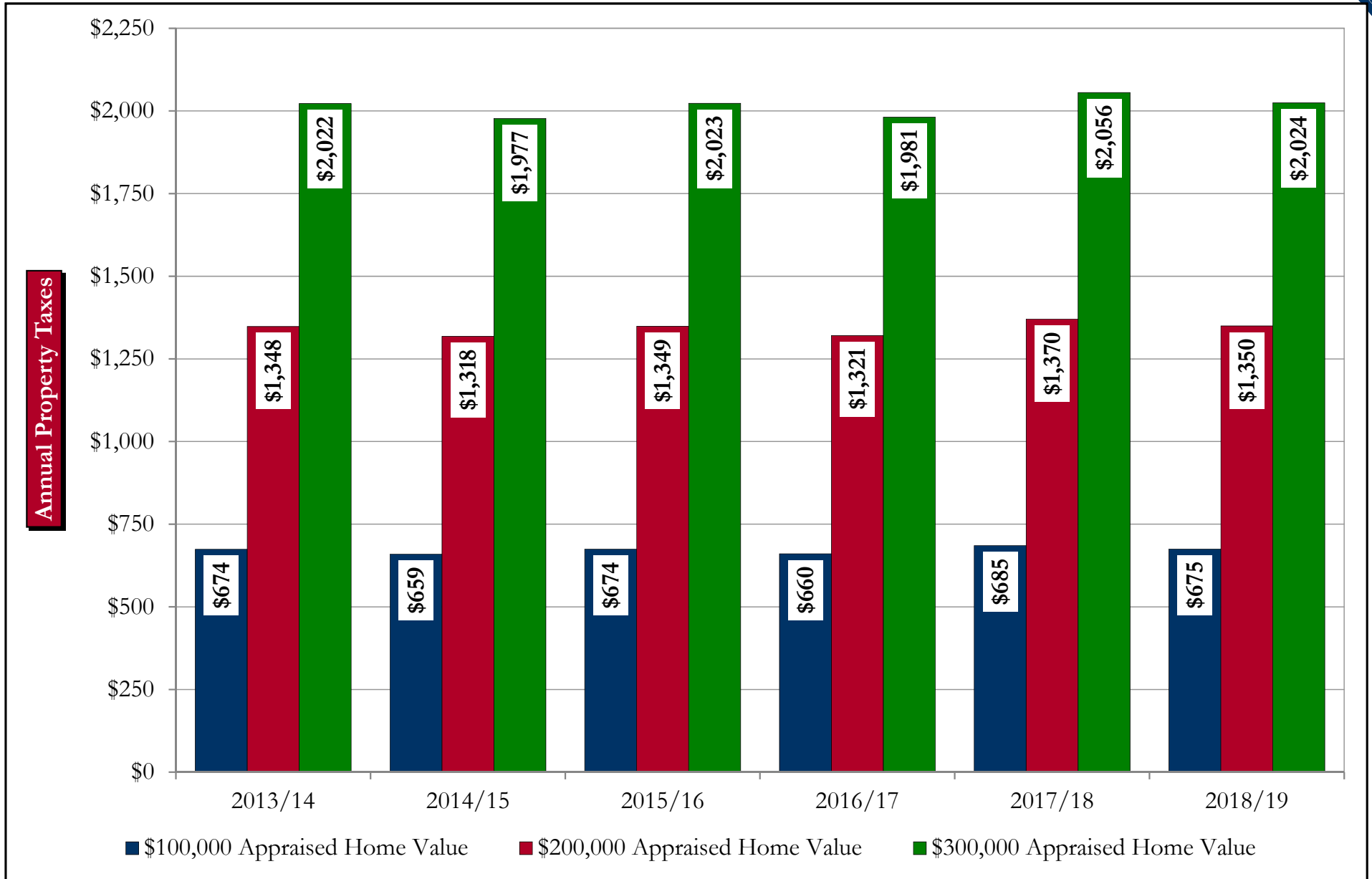


Historical Tax Rates





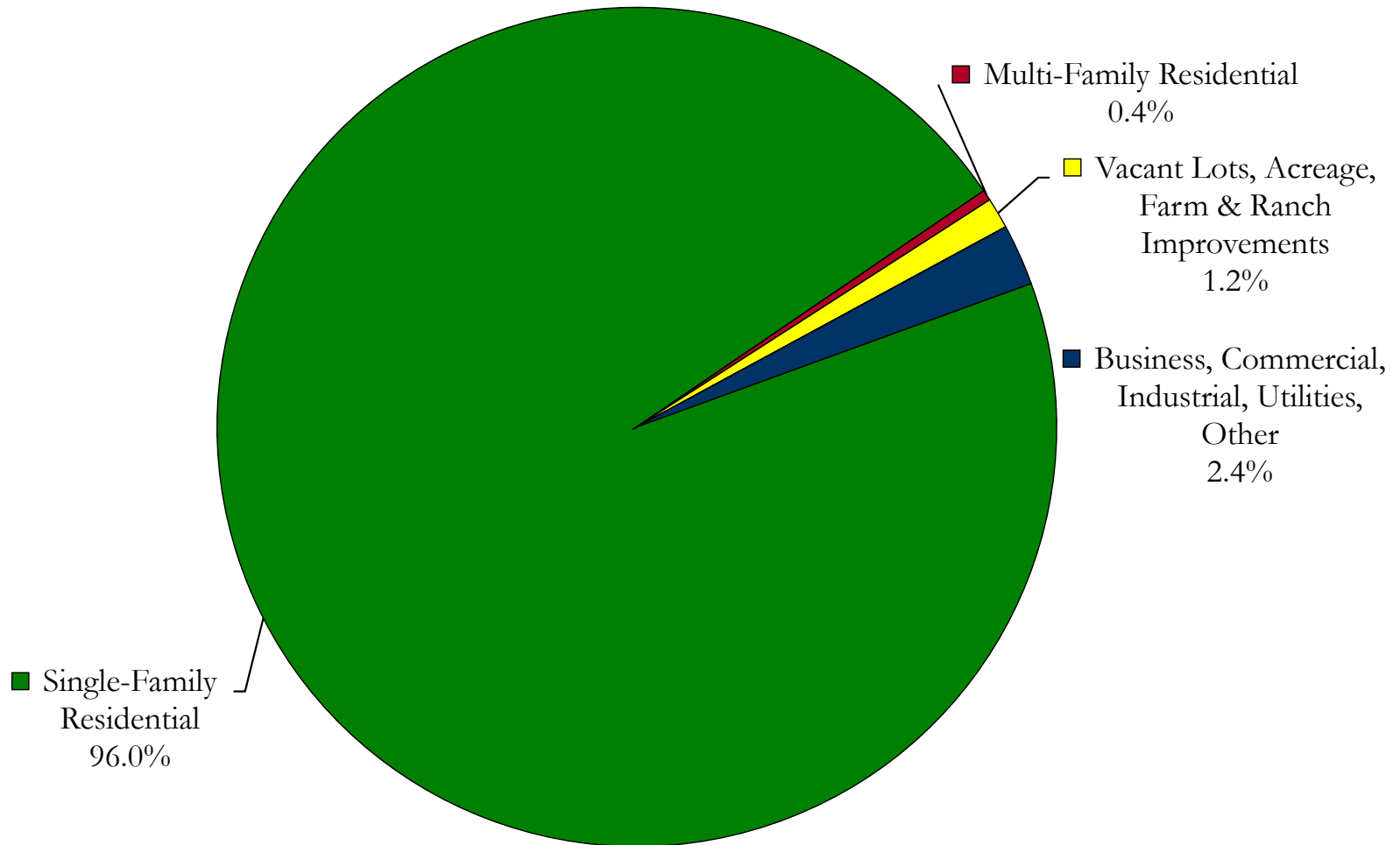
City's Historical Property Taxes For Various Appraised Home Values

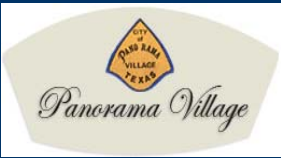




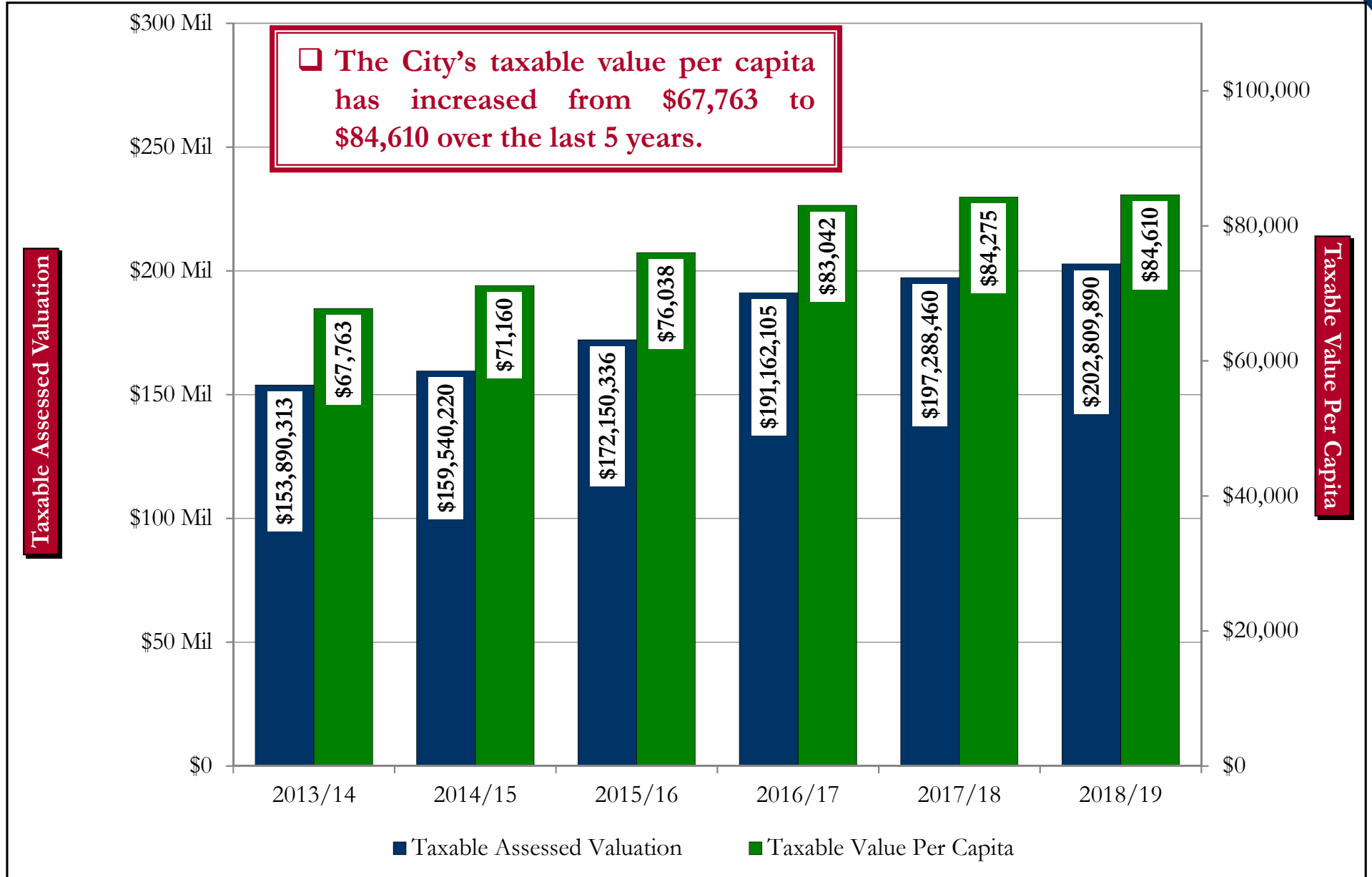
Composition of Total Assessed Valuation – Year 2018/18

The City's Total Assessed Valuation for Year 2018/19 was \$206,059,774.



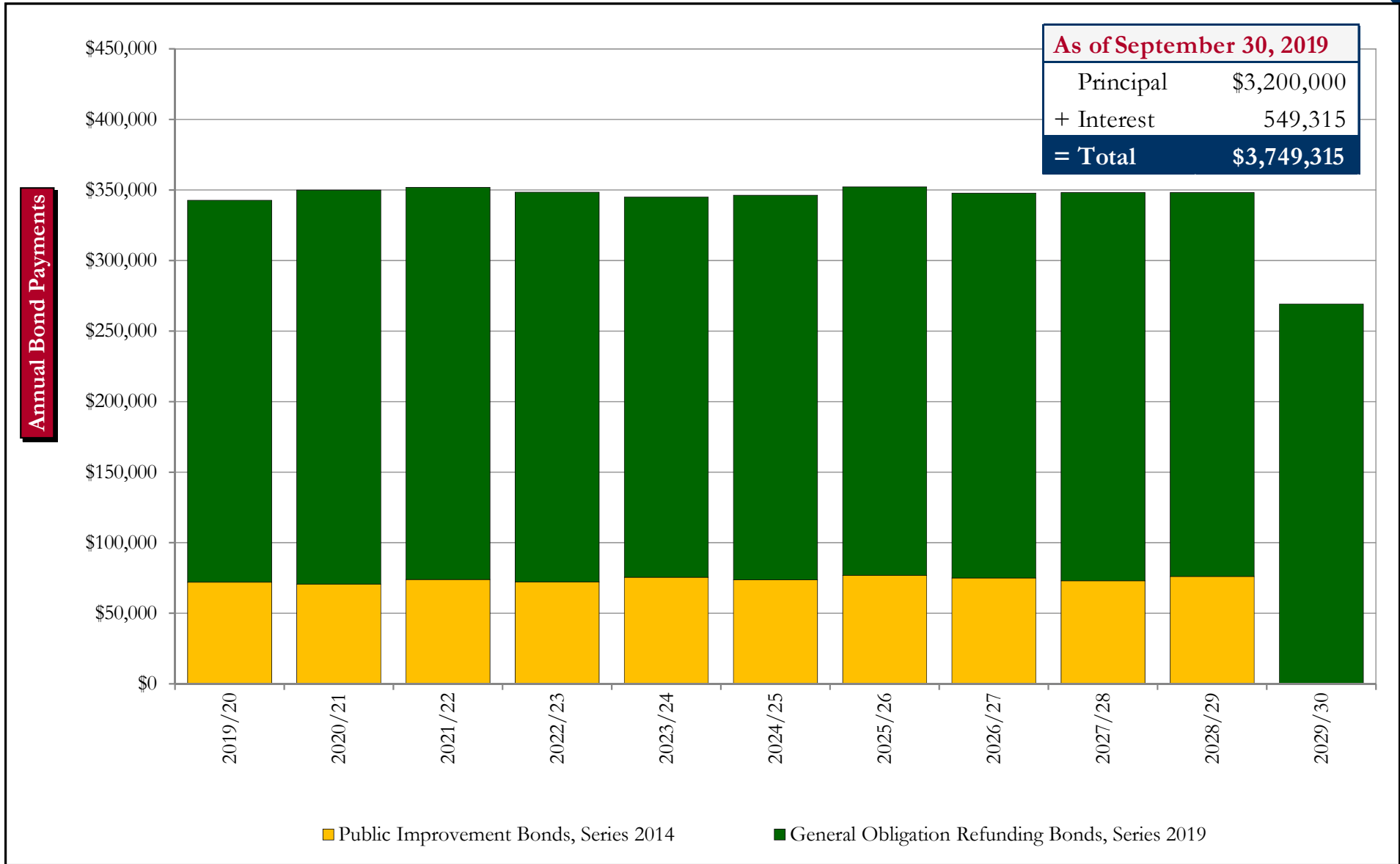


Historical Taxable Assessed Valuation and Taxable Value Per Capita





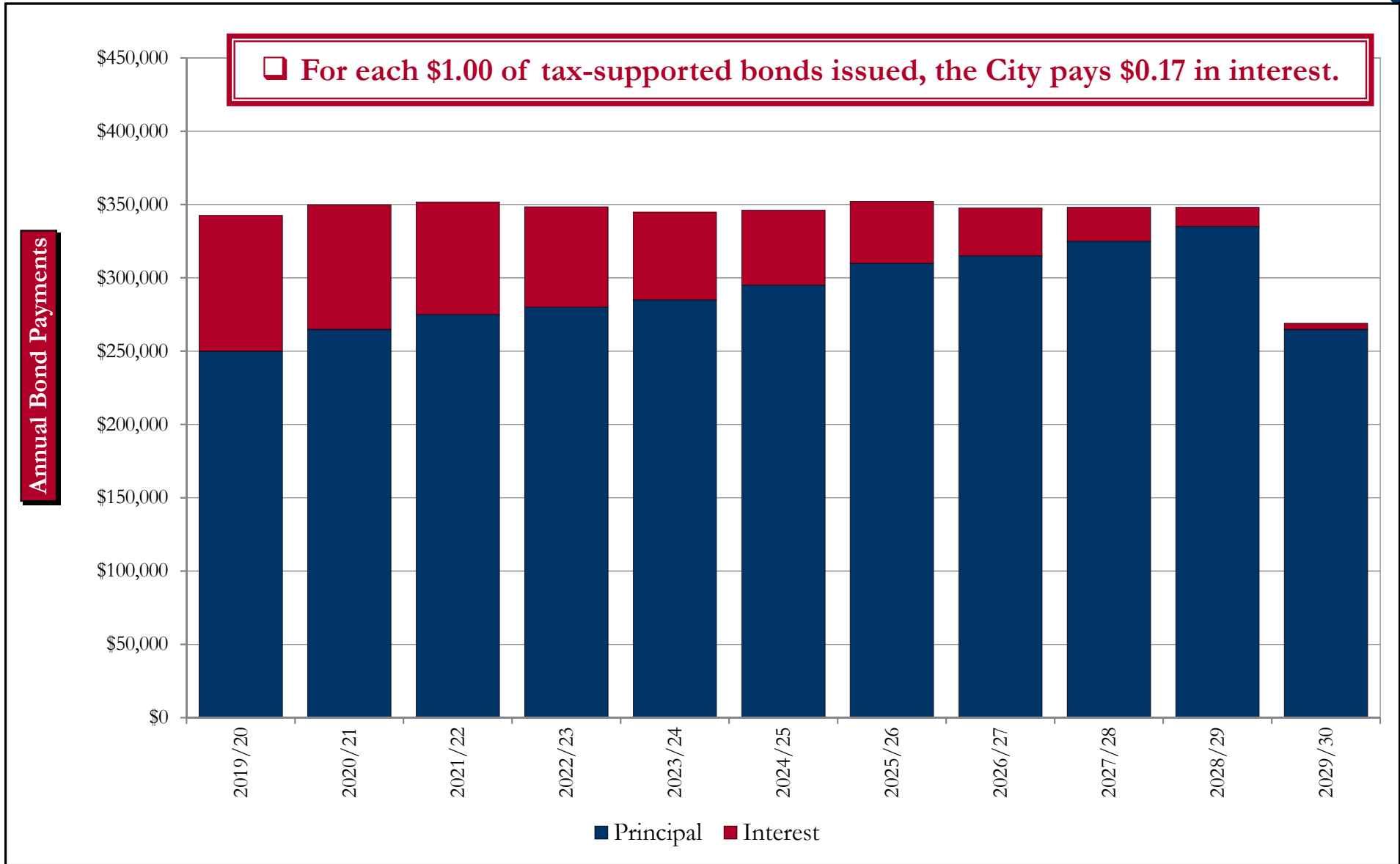
Tax-Supported Debt Service By Series



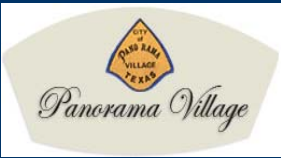
Note: Debt service payments reflect payments from October 1 through September 30.



Tax-Supported Debt Service By Principal and Interest



Note: Debt service payments reflect payments from October 1 through September 30.

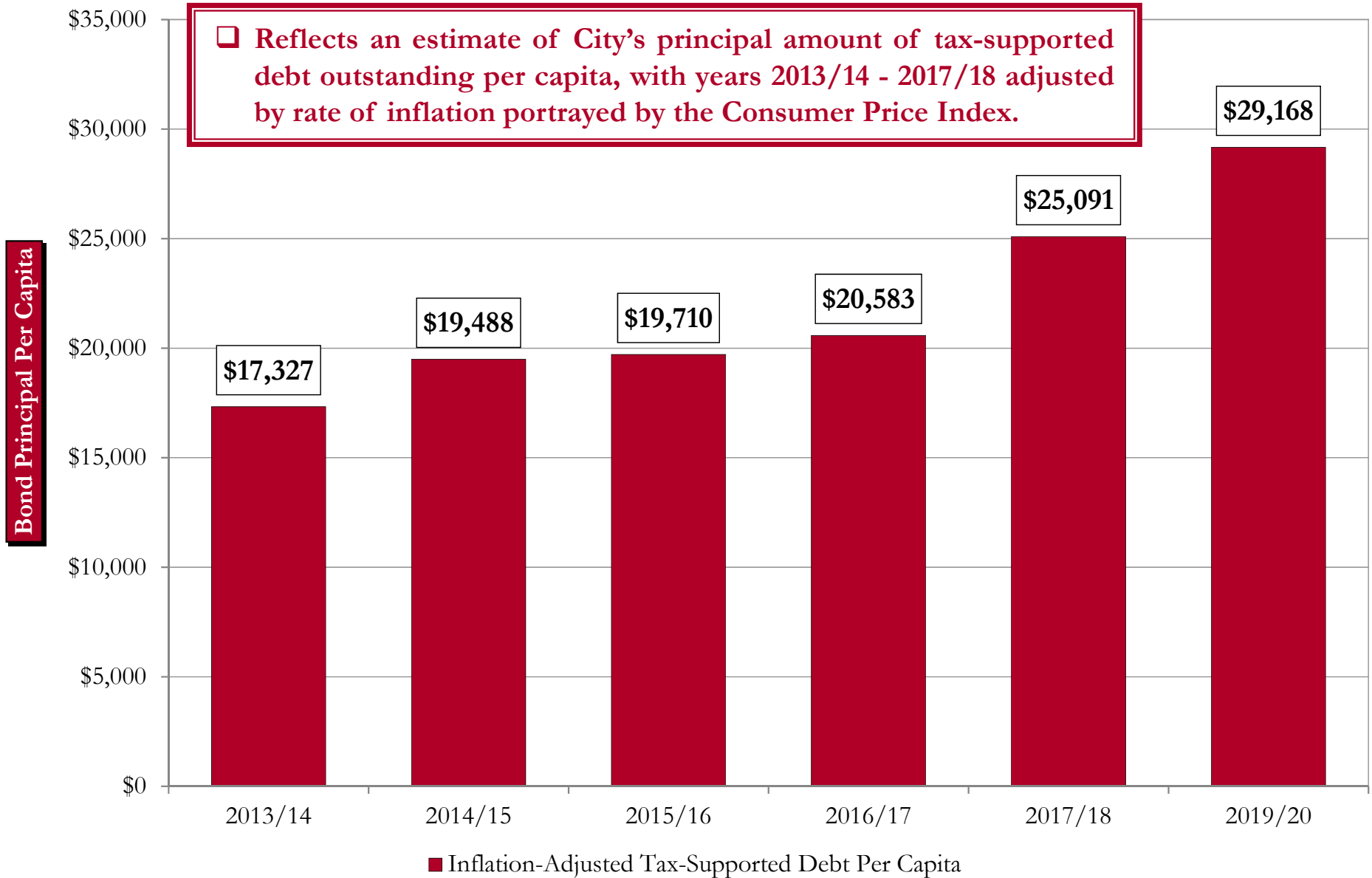


Summary of Tax-Supported Debt Outstanding By Series – As of Fiscal Year Ended September 30, 2019

No.	Issue Description	Purpose	Original Principal Amount	Outstanding Principal	Total Outstanding Debt Service	Outstanding Principal Per Capita	Outstanding Debt Service Per Capita	Final Maturity Date	Partially Secured by Ad Valorem Taxes	Total Proceeds Received	Spent Proceeds	Unspent Proceeds
1	Public Improvement Bonds, Series 2014	Capital Improvements	\$850,000.00	\$645,000.00	\$738,706.25	\$266.09	\$304.75	03/01/2029	Yes	\$850,000.00	\$850,000.00	\$0.00
2	General Obligation Refunding Bonds, Series 2019	Refunding at a lower interest rate, etc.	\$2,555,000.00	\$2,555,000.00	\$3,010,609.00	\$1,054.04	\$1,242.00	03/01/2030	Yes	\$2,555,000.00	\$2,555,000.00	\$0.00
Totals:				\$3,200,000.00	\$3,749,315.25	\$1,335.00	\$1,564.17			\$3,405,000.00	\$3,405,000.00	\$0.00



Inflation-Adjusted Tax-Supported Debt Per Capita





Contact Information and Links to Additional Resources

☐ Main Office Contact Information:

Physical and Mailing Address:

99 Hiwon Drive

Panorama Village, Texas 77304

Phone: (936) 856-2821

☐ For additional information regarding this report, please contact:

Lisa Evans

City Secretary

Phone: (936) 856-2821

Email: levans@panoramavillagetx.org

☐ Links to Additional Resources:

<https://www.comptroller.texas.gov/transparency/local/debt/cities.php>

http://www.brb.state.tx.us/local_debt_search.aspx